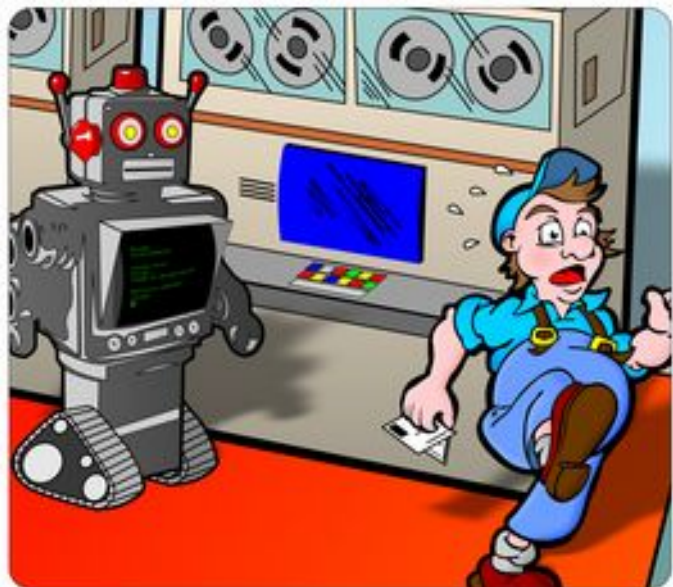


**COLECO  
VISION™**

**CARTRIDGE INSTRUCTIONS**

# Bugs'n Bots

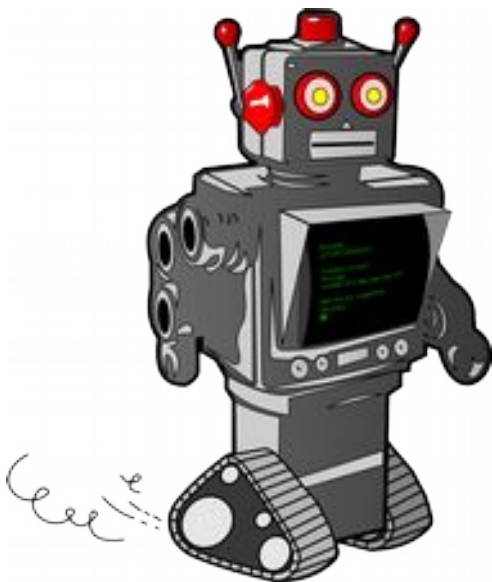
by **COLECO VISION**



**Collect all the security cards to stop the crazy computer!**

**COLECO**

# Bugs'n Bots



---

## GAME DESCRIPTION

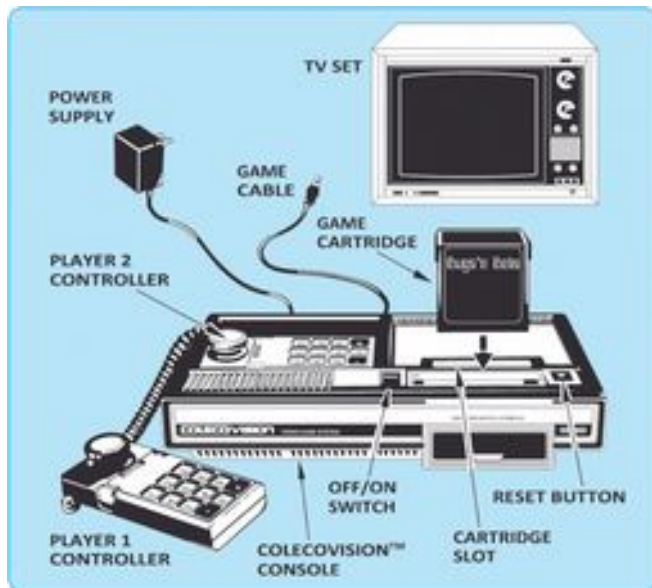
---

When you have been hired as a computer technician in this factory, you thought you had found the ideal job: all the computing and industrial tasks are managed by a mainframe computer which drives robot workers and can solve any production difficulty alone.

The problem is that this computer is so old and buggy that it goes wrong all the time and the robots become completely crazy.

It is precisely at this point that you start. While avoiding robots and traps, you must get all the security cards that the computer has thrown away across each sector in order to stop it.

## GETTING READY TO PLAY



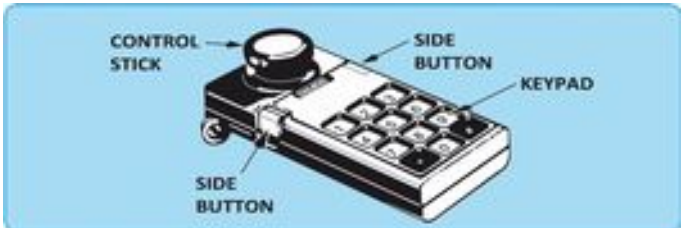
- Make sure the COLECOVISION™ console is connected to TV. Make sure power supply is plugged into console. Then plug power supply into a 110/120 volt AC outlet.
- TV should be on and tuned to same channel as the Channel Select switch on the console.
- To play Bugs'n Bots™, use the controller in Port 1 (the rear jack).

- **ALWAYS MAKE SURE COLECOVISION™ UNIT IS OFF BEFORE INSERTING OR REMOVING A CARTRIDGE.**  
Turn **Off/On** switch to **On** after cartridge is inserted.

---

## USING YOUR CONTROLLERS

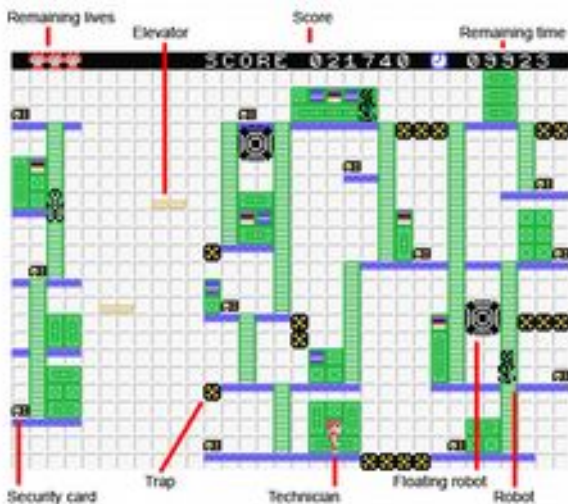
---



1. **Control Stick:** Pushing the Control Stick left or right causes your character to move. Pushing it up or down while your character is over a ladder causes him to climb. Note that it is easier to climb a ladder by pushing the Control Stick diagonally.
2. **Side Buttons:** Press any button to start a game and to jump.



## HERE'S HOW TOPLAY



Move your character around each screen and pick up all the security cards.

Avoid robots and traps by using ladders. You can jump on platforms but be careful not to fall from too high or you will lose a life!

You can also use elevators but be careful neither to fall down the shaft nor to be crushed on top of the screen.

**NOTE:** The Reset Button on the console “clears” the computer. It can be used to start a new game at any time, and can also be used in the event of game malfunction.

---

## SCORING

---

Each security card you pick up gives you 50 points. When you complete a level, you are granted 10 points for every 50 remaining time units.

Every 10,000 points, you get an extra life, except if you have already got 9 lives.

**Beware!** You lose a life when :

- you are hit by a robot or you touch a trap.
- you fall from too high or you fall down out of the screen.
- you are on an elevator which reaches the top of the screen.
- time is up.

The game is over when you have no life left. If you have beaten the highscore, you are notified and your score appears on title screen.

---

## THE FUN OF DISCOVERY

---

This instruction booklet will provide the basic information you need to get started playing Bugs'n Bots, but it is only the beginning! You will find that this cartridge is full of special features that make Bugs'n Bots exciting every time you play. Experiment with different techniques and enjoy the game!

---

## HOW TO REACH US

---

**Nicam Shilova**

<http://www.nicamshilova.fr>

**CollectorVision**

[www.collectorvision.com](http://www.collectorvision.com)

---

## CREDITS

---

Program, GFX, SFX and Music by Nicolas CAMPION

Package ©2012 CollectorVision

Made in Canada by CollectorVision

Montreal, Quebec. Printed in Canada

Box and manual by Vincent GODEFROY – [www.colecoboxart.com](http://www.colecoboxart.com)



