

**COLECO
VISION™**

CollectorVision
Games
Guide No. 099094

CARTRIDGE INSTRUCTIONS

MAZZEZAM

by **E-Ed**

CHALLENGE



*How many levels can you finish before saying
it is too much for you?*

COLECO

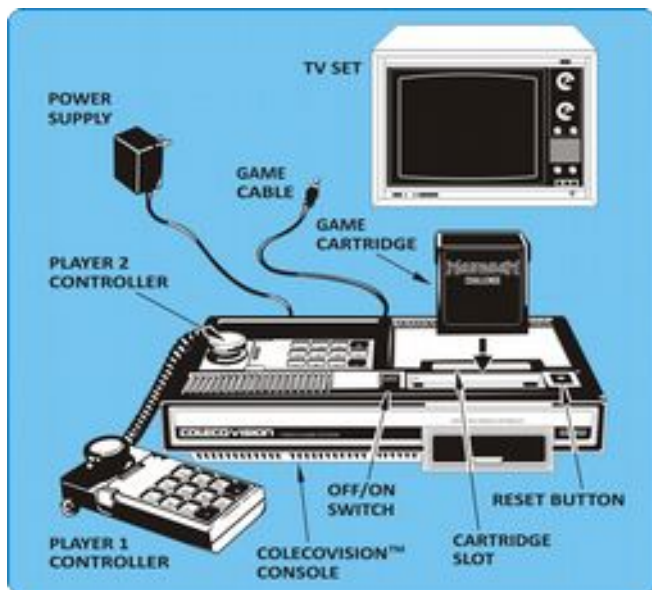
GAME DESCRIPTION

MazezaM Challenge (pronounced “may-zam”) is a simple puzzle game based on MazezaM from Malcolm Tyrrell.

MazezaM Challenge features 30 incredible levels of mind battles. How many levels can you finish before saying it is too much for you?

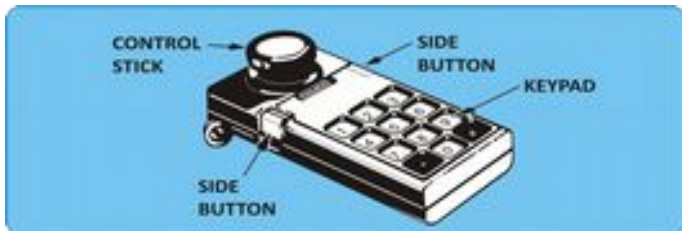


GETTING READY TO PLAY



- Make sure the COLECOVISION™ console is connected to TV. Make sure power supply is plugged into console. Then plug power supply into a 110/120 volt AC outlet.
- TV should be on and tuned to same channel as the Channel Select switch on the console.
- To play Mazezam Challenge™, use the controller in Port 1 (the rear jack).
- **ALWAYS MAKE SURE COLECOVISION™ UNIT IS OFF BEFORE INSERTING OR REMOVING A CARTRIDGE.** Turn **Off/On** switch to **On** after cartridge is inserted.

USING YOUR CONTROLLERS



Control Stick: Press the Control Stick in any direction to move the Hero in the selected direction.

Side Buttons: They can be used both in the game, but you must think about a famous game company cheat code !

Keypad * and #: Use Keypad * to retry the game and Keypad # to pause the game.

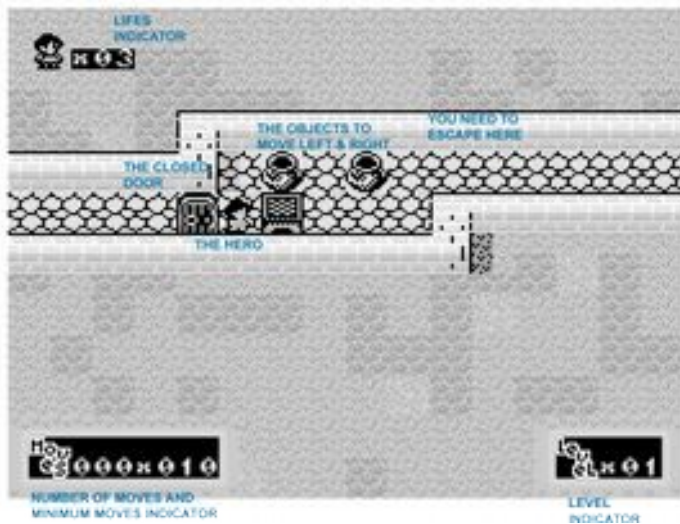
HERE'S HOW TO PLAY

Press any Keypad Button to start your maze adventure. If you don't press a Keypad Button, a demo screen appears. Use this screen to learn how to win the first levels.

When you're ready to start, press any Keypad Button to start your adventure.

The objective of the game is to manoeuvre the Hero through 30 exciting mazes.

You enter each maze on the left and you have to get to the exit on the right by pushing rows of objects left and right. If you get stuck you can retry the current level, but this will cost you a life.



NOTE: The Reset Button on the console “clears” the computer. It can be used to start a new game at any time, and can also be used in the event of game malfunction.

KEEP YOUR PASSWORDS SAFE

Each level has a password. Please keep it safe by writing it here for the levels you've completed.

Level 01: _____

Level 16: _____

Level 02: _____

Level 17: _____

Level 03: _____

Level 18: _____

Level 04: _____

Level 19: _____

Level 05: _____

Level 20: _____

Level 06: _____

Level 21: _____

Level 07: _____

Level 22: _____

Level 08: _____

Level 23: _____

Level 09: _____

Level 24: _____

Level 10: _____

Level 25: _____

Level 11: _____

Level 26: _____

Level 12: _____

Level 27: _____

Level 13: _____

Level 28: _____

Level 14: _____

Level 29: _____

Level 15: _____

Level 30: _____

HOW TO REACH US

AlekMaul

www.portabledev.com

CollectorVision

www.collectorvision.com

THE FUN OF DISCOVERY

This instruction booklet will provide the basic information you need to get started playing Mazezam Challenge, but it is only the beginning! You will find that this cartridge is full of special features that make Mazezam Challenge exciting every time you play. Experiment with different techniques and enjoy the game!



CREDITS

Mazezam ©2002 Malcolm Tyrrell

Mazezam Challenge for Colecovision by

Jean-Michel Girard ©2015

Package ©2016 Collectorvision Games, Inc.

Made in Canada by CollectorVision, Inc., Montreal, Quebec.

Manual by AlekMaul. Printed in Canada.



MazezaM is based on the ZX-Spectrum computer game from Malcolm Tyrrell., © 2002.

Program and Audiovisual © 2015.

Program by AlekMaul www.portabledev.com