

**COLECO
VISION™**

Guide No. 099061

CARTRIDGE INSTRUCTIONS

NIBBLI

Son of Nibbler

COLLECTOR Vision
Games



**Eat all the food around the maze without
running into your tail !**

COLECO



GAME DESCRIPTION

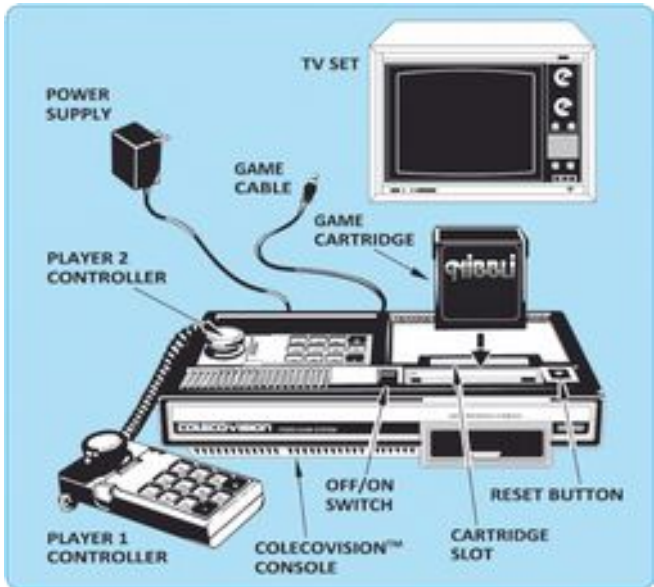
As Nibbli, Nibbler's son, you are a reptilian explorer in a neon land. You slide around corners and blockades to discover the most successful paths, but beware... what looks like an easy route may be the path to your destruction.

Plot your course carefully and you can eliminate all the particles in each new land. As they disappear, you grow longer. Be careful to stay out of your own way - if you run into yourself, you cause your own destruction.

Your speed automatically increases in each land and your time for bonus is limited, so plan your route in advance - once you start to move, there is little time for decisions.

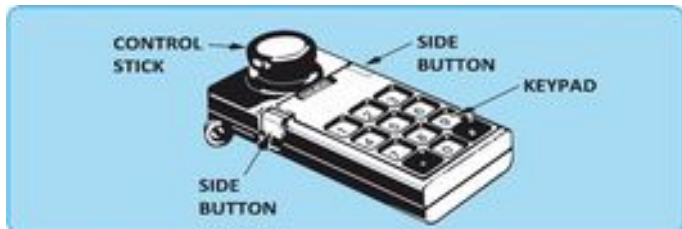
Experience the neon land of glowing lights - or slide into oblivion!

GETTING READY TO PLAY



- Make sure the COLECOVISION™ console is connected to TV. Make sure power supply is plugged into console. Then plug power supply into a 110/120 volt AC outlet.
- TV should be on and tuned to same channel as the Channel Select switch on the console.
- To play Nibbli, Son of Nibbler™, use the controller in Port 1 (the rear jack).
- **ALWAYS MAKE SURE COLECOVISION™ UNIT IS OFF BEFORE INSERTING OR REMOVING A CARTRIDGE.** Turn **Off/On** switch to **On** after cartridge is inserted.

USING YOUR CONTROLLERS

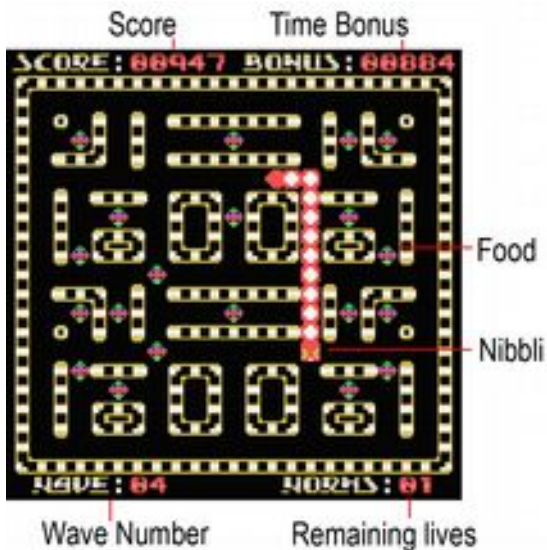


Choose your difficulty level with the Keypad.

Use Control Stick to move Nibbli, Son of Nibbler. If there is no obstacle to stop him, Nibbli goes on his way.



HERE'S HOW TO PLAY



Slinking through an unknown land, Nibbli finds himself in an iridescent world of constant change. Gorging and gobbling, out-of-control Nibbli devours everything in sight. Still he must complete his task. He must explore glowing new worlds where even greater challenge await.

As Nibbli, Nibbler's son, you must chart your course while moving at increasingly exhilarating speeds.

Beware - what looks like an easy route may be the path to your destruction.

As you eat food strewn about the floor in the maze, your body grows longer. At every turn of the corner, you risk running into yourself and causing your own destruction!

Experience the neon land of glowing lights - or slide into oblivion. The longer you play, the bigger the challenge.

NOTE: The Reset Button on the console “clears” the computer. It can be used to start a new game at any time, and can also be used in the event of game malfunction.

SCORING

Nibbli grows longer each time he eats food. The more difficult is the level, the longer the food make him grow.

After you've been through the 5 waves, speed increases or food make Nibbli grow even longer.

When a level is complete, remaining bonus time is added to your score.

Note that bonus time decreases faster when you don't move in the maze.

THE FUN OF DISCOVERY

This instruction booklet will provide the basic information you need to get started playing Nibbli, Son of Nibbler, but it is only the beginning! You will find that this cartridge is full of special features that make Nibbli, Son of Nibbler exciting every time you play. Experiment with different techniques and enjoy the game!

HOW TO REACH US

bfg – Gamepassion

<http://bfg-gamepassion.blogspot.fr>

Collectorvision

www.collectorvision.com

CREDITS

Program and audiovisual ©2014 Michel Louvet

Package ©2014 www.collectorvision.com

Box and manual by Vincent Godefroy – www.colecoboxart.com

Made in Canada by CollectorVision Games, Inc.

Montreal, Quebec.



COLLECTOR Vision Games

