

**COLECO  
VISION™**

CollectorVision  
Games  
Guide No. 099070

**CARTRIDGE INSTRUCTIONS**

# TANK CHALLENGE



*Jump into your tanks and get ready for the thrill  
of Head-To-Head Tank Challenge!*

**COLECO**

---

## GAME DESCRIPTION

---

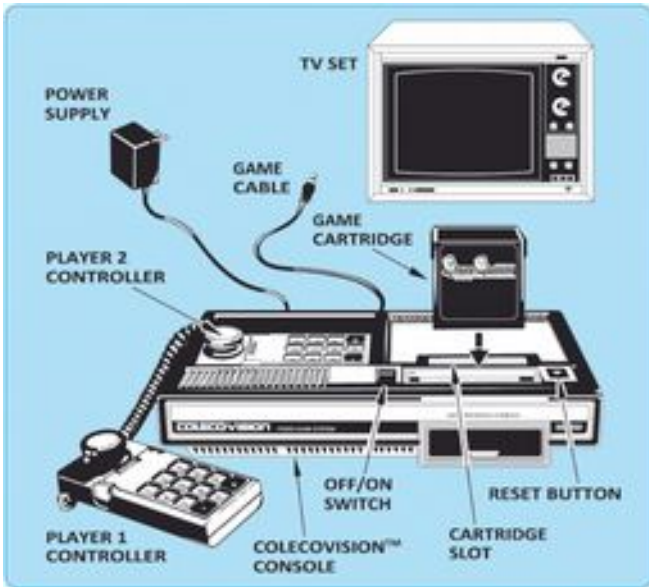
Save Pows, see who has the best aim, or defend your base. You'll need to open lazer doors, blast through bricks with TNT, and find hidden tunnels to defeat your opponent.

So grab a friend, jump into your tanks, and get ready for Head-To-Head Tank Challenge!

---

## GETTING READY TO PLAY

---



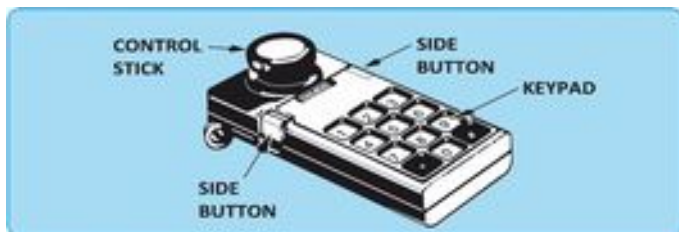
- Make sure the COLECOVISION™ console is connected to TV. Make sure power supply is plugged into console. Then plug power supply into a 110/120 volt AC outlet.

- TV should be on and tuned to same channel as the Channel Select switch on the console.
- To play Head-To-Head Tank Challenge™, use the controller in Port 1 (the rear jack).
- **ALWAYS MAKE SURE COLECOVISION™ UNIT IS OFF BEFORE INSERTING OR REMOVING A CARTRIDGE.** Turn **Off/On** switch to **On** after cartridge is inserted.

---

## USING YOUR CONTROLLERS

---



To shoot bullets/cannonballs: Press the Left Side Button.

To get in your tank: Walk over your tank. When your man turns white, press the Right Side Button.



To get out of your tank: Press the Right Side Button.

To drive your tank: Push Control Stick up to move forwards. Pull down to move backwards. Push left or right to turn. You can also do this while moving by pressing a diagonal direction.

Restart Current level (REMATCH) by pressing 0 on the keypad.

Restart Game by pressing # on the keypad.

Press \* to PAUSE and Fire to continue playing.

After a match is over, a menu appears. Press up or down to select. If you are on the AREA selection, push left or right and it will preview the next area. Press Left Side Button to make your selection.

---

## HERE'S HOW TO PLAY

---



On title screen, press Left Side Button to go to the Options Menu or to Start the game.

Push the Control Stick left or right in the Options Menu to select.

Press Right Side Button to go from the Options back to the Game Mode Selection.

## GAME MODES

### Save POWs

Save more POWs than your opponent to win. Use your tank to blast through walls to get to the POWs. To save them, simply get out of your tank and walk up to them to free them from their restraints.

### Most Hits Wins

Shoot your opponent to rack up points before time runs out. If you are in it when it explodes, your opponent gets 2 points. 1 point for the tank and 1 point for the man.

### Destroy Enemy Base

You must destroy your opponents base before they destroy yours or time runs out.



## OPTIONS

Ricochet - Turn on to have bouncing bullets and cannonballs.

Area - Select from 00 to 32 for a total of 33 areas to choose from.

Speed - Select 1 to 5 speed settings. Five being the fastest.

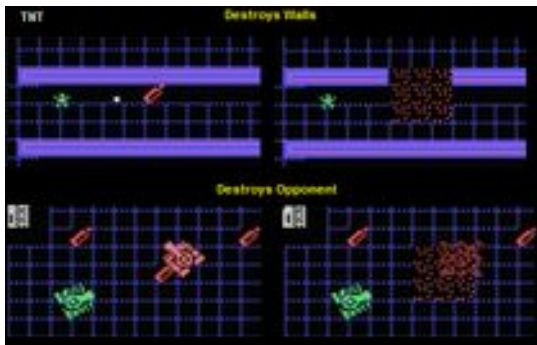
## OBSTACLES

POW Wall - Hit once with a cannonball to destroy.

Bricks - Hit twice with a cannonball to destroy.

Lazer Door - Shoot one of the pads around the lazer door to turn the lazer on or off. This can be used as a shield or a weapon.

TNT - Shoot once with any weapon to detonate. TNT can destroy tanks and ANY wall in the game.

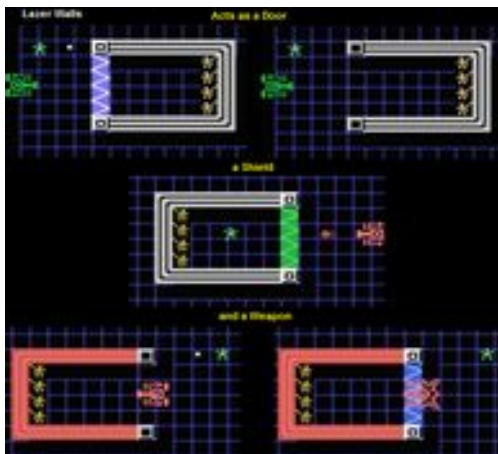


Fake Wall - Some levels have a fake wall that you must find in order to reach your goal.

## HINTS

If your tank is hit by a cannonball, it's still operational for a few seconds. After that it stops but you can still move your turret and fire. A couple seconds later, it explodes. Figure out the timing so you know when to get out of your tank.

Use Lazer Doors effectively to destroy your opponent. If you are trapped by a lazer wall, you may have to destroy yourself so you can respawn. Sometimes it is the only way.



Tank won't fit? Use TNT to destroy the wall or see if there is a fake wall you can walk through.

Your cannonball can destroy your opponent's cannonball. You may be able to use this to defend your base.

When you respawn, you are invulnerable to attack for a few seconds. Use this time wisely.

### Special Features!

While in your Tank, press [1] to hide your tank and press [2] to reveal it! Sneak up on your opponent.

On the Title Screen press [3-9] to start with 30-90 seconds on the clock.

**NOTE:** The Reset Button on the console "clears" the computer. It can be used to start a new game at any time, and can also be used in the event of game malfunction.

---

## THE FUN OF DISCOVERY

---

This instruction booklet will provide the basic information you need to get started playing Head-To-Head Tank Challenge, but it is only the beginning! You will find that this cartridge is full of special features that make Head-To-Head Tank Challenge exciting every time you play. Experiment with different techniques and enjoy the game!

---

## HOW TO REACH US

---

### **Collectorvision**

[www.collectorvision.com](http://www.collectorvision.com)

---

## CREDITS

---

Program by Todd Spangler ©2014 - All rights reserved.

Package ©2014 [www.collectorvision.com](http://www.collectorvision.com)

Made in Canada by Collectorvision Games, Inc.,

Montreal, Quebec.

Box & manual by Vincent Godefroy - [www.colecoboxart.com](http://www.colecoboxart.com)